

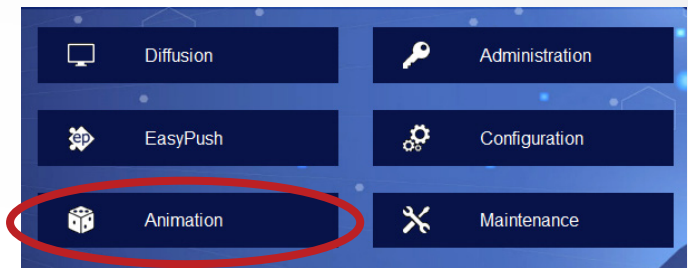


## In short

With ANIM EDITOR, the VsBox automatically sets up an interface for mounting your media with the possibility of special effects.

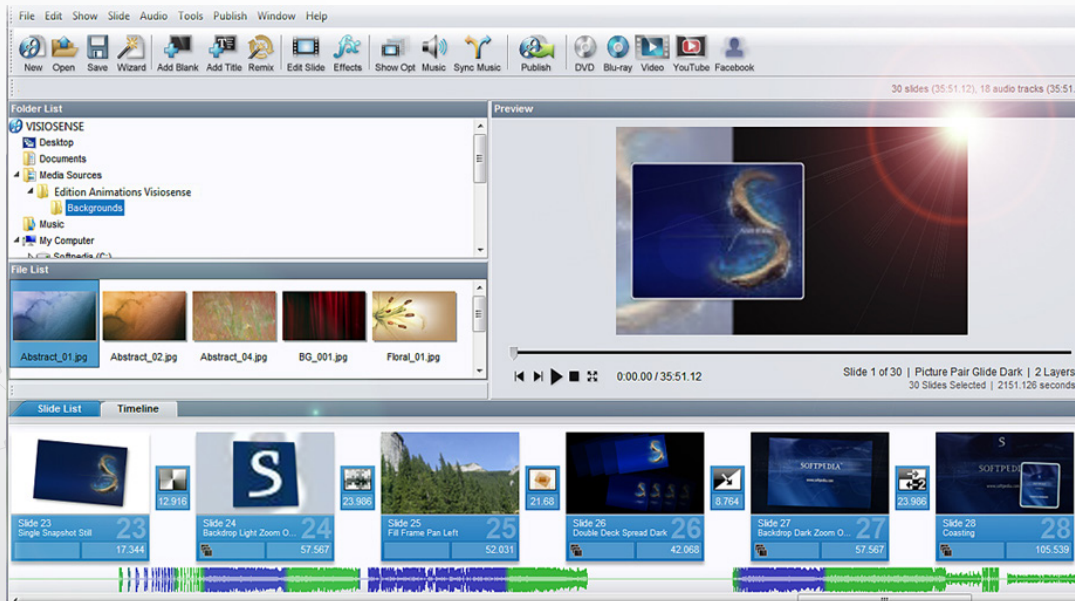
### 01 TO CREATE YOUR MONTAGES

Creation of animations with several hundred effects and transitions, sound dubbing, fade, zoom, rotate etc...



### 02 EDITING INTERFACE

On the upper part I select my media by viewing them. Then I send them by simple drag and drop.



On the lower part I mount my scenarios easily by choosing among the many effects of transition then I add my music and if I want text over them. Then under the sequencing tab, I insert the video obtained in my sequence to broadcast.