

## 01 VISIOSENSE DIGITAL SIGNAGE SOLUTION

A communication platform with many advantages



A multi-purpose solution:

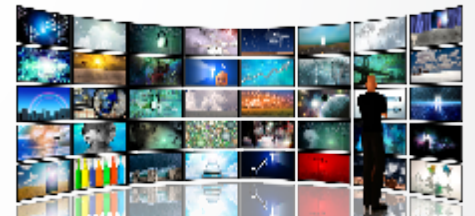


## 02 EXTENSIONS

A digital signage solution with many extensions for all specific needs.



Totem



video walls



### TECHNICAL SUPPORT

Direct technical support with the development team  
[support@visiosense.fr](mailto:support@visiosense.fr)

100% FRENCH DESIGN

### TECHNICAL CHARACTERISTICS

#### SUPPORTED CONTENT

- Support all media in native mode
- PowerPoints, Flash, Pdf, Vob, Mpeg, Avi, Mov, Wmv, Jpeg, etc..
- Internet content Url, flux, Rss, web radio, widgets

#### ADVANCED FEATURES

- 1080P, 4/3, 16/9, portrait mode, clone, mirroring
- Screen splitting, up to 5 simultaneous playlist streams and 4 banners
- Flexible programming system: Schedule planner and delayed sending
- 2 Diffusion spaces : Central, Local + specific media deposit (red thread)
- Control, Iteration statistics and reports in live

#### ESSENTIAL

- Security and robustness of the Linux system; Encrypted IP frames
- HDMI, VGA, 3.5mm audio jack, USB for monitor
- Power consumption 15 watts and total absence of noise
- Flat and compact control box: 160×175×23mm